



CTA 868/1/WR/SM/W1

<u>Technical Data</u>			
Object	Dipole Antenna	Page	1 of 3
Customer		Date	May 2, 2008
System	ISM – 868 MHz	Rev.	
Model Name	CTA 868/1/WR/SM/W1	Written by	
Electrical Specifications			
Frequency Range (MHz)	824 ~ 894		
Band Width (MHz)	70		
V.S.W.R (Min)	1.9 : 1		
Gain (Max)	0 ± 1 (dBi)		
Input Impedance	50 (Ω)		
Polarization	Linear		
Mechanical Specifications			
Antenna Size (Length x Diameter)	105 × 11 mm		
Weight	13 (g)		
Connector	SMA Male		
Operation Temperature	– 30 ~ 70 (°C)		
Operation Humidity	10 ~ 90 (%)		

Specifications subject to change without any notice !

CompoTEK GmbH, Lindwurmstrasse 97A, 80337 München, Germany
Fon:+49 (0)89/544323-0, Fax:+49 (0)89/544323-21
info@compotek.de, www.compotek.de

Fig 1. Return Loss (Agilent E8358A 300KHz~9GHz PNA Series Network Analyzer)



Fig 2. V.S.W.R (Agilent E8358A 300KHz~9GHz PNA Series Network Analyzer)





CompoTEK

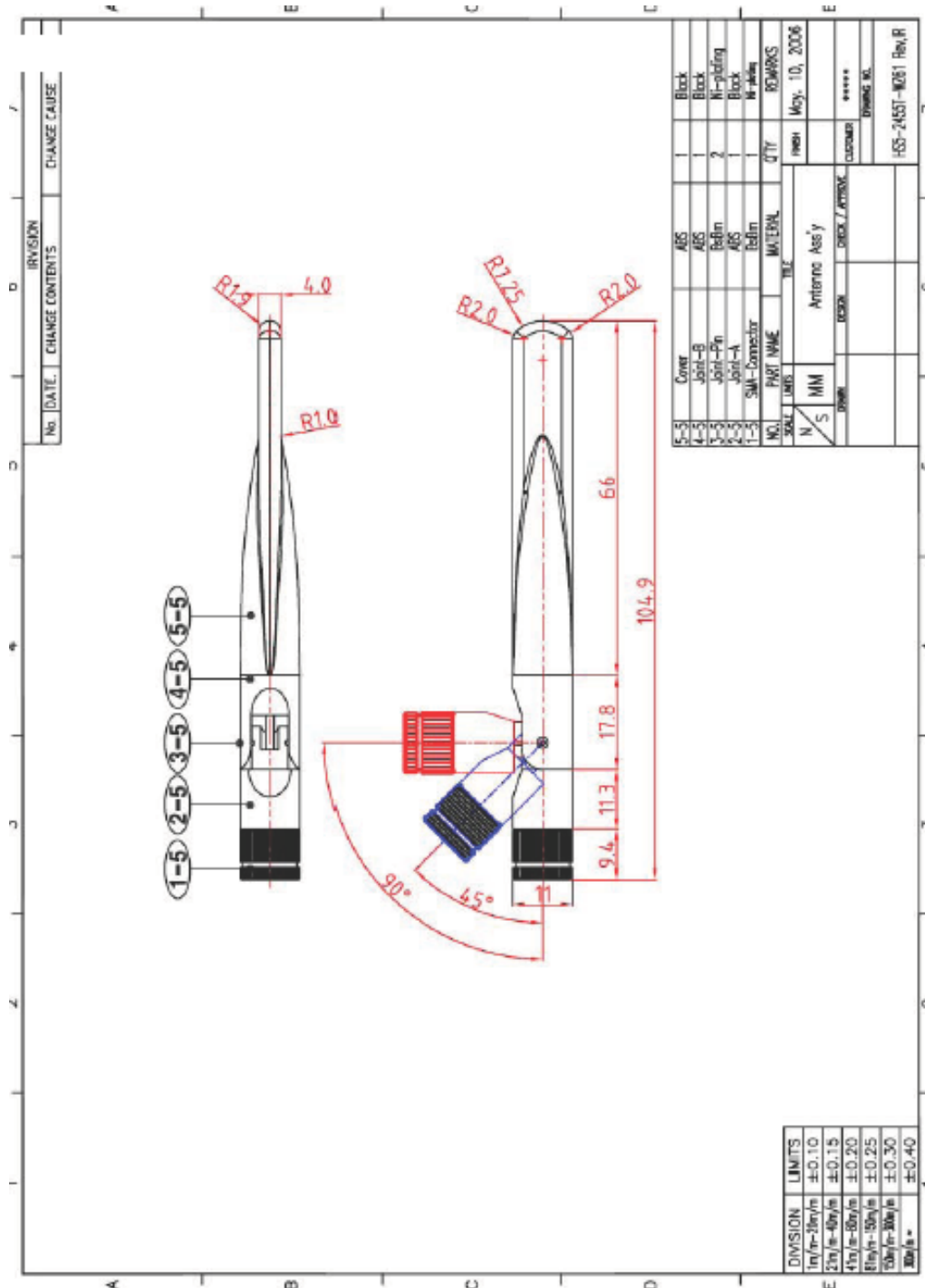


Fig 3 Drawing